

A summary of current NKG2D-based CAR clinical trials

Curio, Sophie; Jonsson, Gustav; Marinović, Sonja

Source / Izvornik: **Immunotherapy Advances**, 2021, 1, 1 - 8

Journal article, Published version

Rad u časopisu, Objavljena verzija rada (izdavačev PDF)

<https://doi.org/10.1093/immadv/ltab018>

Permanent link / Trajna poveznica: <https://um.nsk.hr/um:nbn:hr:184:286089>

Rights / Prava: [Attribution 4.0 International](#)/[Imenovanje 4.0 međunarodna](#)

Download date / Datum preuzimanja: **2025-03-20**



Repository / Repozitorij:

[Repository of the University of Rijeka, Faculty of Medicine - FMRI Repository](#)



Review

A summary of current NKG2D-based CAR clinical trials

Sophie Curio^{1,2,*†,◊}, Gustav Jonsson^{3,†,◊}, Sonja Marinović^{4,5,†} and the young European Federation of Immunological Societies (yEFIS)

¹Department of Life Sciences, Imperial College London, London, UK, ²The University of Queensland Diamantina Institute, The University of Queensland, Woolloongabba, QLD 4102, Australia, ³Institute of Molecular Biotechnology of the Austrian Academy of Sciences, Vienna, Austria, ⁴Laboratory for Personalized Medicine, Division of Molecular Medicine, Ruder Boskovic Institute, Zagreb, Croatia and ⁵Department of Histology and Embryology, Faculty of Medicine, University of Rijeka, Rijeka, Croatia

[†]These authors contributed equally to this work.

*Correspondence: Sophie Curio, The University of Queensland Diamantina Institute, The University of Queensland, Woolloongabba, QLD 4102, Australia. Email: s.curio@uq.edu.au

Received 18 June 2021; Revised 5 August 2021; Accepted 13 August 2021

Summary

Cancer immunotherapies have significantly improved patient survival and treatment options in recent years. Nonetheless, the success of immunotherapy is limited to certain cancer types and specific subgroups of patients, making the development of new therapeutic approaches a topic of ongoing research. Chimeric antigen receptor (CAR) cells are engineered immune cells that are programmed to specifically eliminate cancer cells. Ideally, a CAR recognizes antigens that are restricted to tumor cells to avoid off-target effects. NKG2D is an activating immunoreceptor and an important player in anti-tumor immunity due to its ability to recognize tumor cells and initiate an anti-tumor immune response. Ligands for NKG2D are expressed on malignant or stressed cells and typically absent from healthy tissue, making it a promising CAR candidate. Here, we provide a summary of past and ongoing NKG2D-based CAR clinical trials and comment on potential pitfalls.

Keywords: NKG2D, CAR T cells, immunotherapy, adoptive cell transfer

Cancer is the second leading cause of death globally, exerting a tremendous financial burden on healthcare systems. Despite significant breakthroughs in diagnosis and

treatment in recent decades, incidence and mortality rates continue to be high. Surgery, adjuvant chemotherapy, and radiotherapy remain the standard treatments to date,

Abbreviations: AML: Acute myeloid leukemia; CAR: Chimeric antigen receptor; MDS: Myelodysplastic syndrome; NK: Natural killer; NKG2D: Natural-killer group 2, member D; NKG2DL: NKG2D ligand; scFV: Single-chain variable fragment; shRNA: Short-hairpin RNA; TIM: TCR inhibitory molecule.

© The Author(s) 2021. Published by Oxford University Press on behalf of the British Society for Immunology.

This is an Open Access article distributed under the terms of the Creative Commons Attribution License (<https://creativecommons.org/licenses/by/4.0/>), which permits unrestricted reuse, distribution, and reproduction in any medium, provided the original work is properly cited.

which, depending on the type of cancer often have low success rates. As a result, several therapeutic strategies are actively being developed, including chimeric antigen receptor (CAR)-T-cell-based immunotherapy, which is a promising therapeutic approach for cancer patients resistant to conventional therapies [1]. A CAR is a synthetic receptor allowing tumor-specific antigen recognition and consists of four main parts: (i) an extracellular recognition domain (ligand sensing), (ii) a hinge domain, (iii) a transmembrane domain, and (iv) an intracellular signaling domain [2]. The extracellular recognition domain of CAR constructs can consist of light and heavy variable chains from the single-chain variable fragment (scFv) from antibodies [3] or other engineered and artificial domains with strong affinities toward various ligands [4,5]. The intracellular signaling domain almost always consists of the CD3 ζ signaling moiety. To enhance the downstream signaling strength of the CAR, the CD3 ζ signaling domain is often fused to one or more co-stimulatory domains [6].

NKG2D (natural-killer group 2, member D) is one of the best characterized activating immune receptors associated with tumor immunosurveillance. Both primary and metastatic cancer cells frequently upregulate stress-induced ligands that are closely related to MHC class I molecules such as MICA, MICB, and the ULBP family of proteins which are then recognized by the NKG2D receptor present on natural killer (NK) cells and various T cell subsets, including CD8⁺ and CD4⁺ $\alpha\beta$ T cells and $\gamma\delta$ T cells [7]. The interaction between the NKG2D ligand (NKG2DL) and the NKG2D receptor triggers the activation, expansion, and production of pro-inflammatory cytokines of effector immune cells, typically leading to target cell elimination [7] (Fig. 1A).

The role of NKG2D and its ligands in tumor immunosurveillance has been demonstrated in animal models, where it was shown that NKG2DLs confer an effective barrier to tumor formation and that NKG2D deficiency results in a decreased ability to fight tumor cells [8,9]. Findings of high NKG2DL expression in human colorectal, cervical, and nasopharyngeal carcinomas and its correlation with improved disease-free survival supported the role of NKG2D in anti-tumor immunity and the notion of NKG2D as a potential immunotherapy target [10]. In contrast to current FDA-approved CAR T cells, which are all based on the expression of a single-chain variable antibody fragment recognizing a tumor-specific antigen [11], NKG2D CAR T cells express an immunoreceptor, including its transmembrane signaling adaptors, that recognizes antigens expressed on the surface of tumor cells. Indeed, a number of clinical trials harnessing NKG2D as a CAR are currently ongoing,

the majority of which are based on CAR T cells, with two trials using CAR NK cells and one trial using CAR $\gamma\delta$ T cells (Table 1). NK cells pose a few advantages over $\alpha\beta$ T cells: primarily, autologous transfer of NK cells has a lower degree of graft versus host disease (GvHD) and cytokine-release syndrome compared to $\alpha\beta$ T cells, which enables the possibility of engineering off-the-shelf CAR NK cell therapies [12]. $\gamma\delta$ T cells are tissue-resident immune cells with inherent anti-tumor function that do not rely on the expression of tumor-specific antigens and therefore provide a promising target for CAR cell therapy [13]. CAR $\gamma\delta$ T cells have been shown to have increased cytotoxicity compared to normal $\gamma\delta$ T cells and maintain their ability to cross-present antigens to conventional T cells [14]. Nonetheless, there are some potential pitfalls of CAR $\gamma\delta$ T cells and CAR NK cells. Preclinical data suggests that persistence of both cell types is limited and reduced compared to CAR $\alpha\beta$ T cells [15,16] and CAR NK cells can be sensitive to thawing and long-term storage [17]. Despite some of the apparent advantages, most importantly the possibility to develop off-the-shelf therapy, no CAR $\gamma\delta$ T cells or CAR NK cells have been approved to this date and more research is needed to determine whether they can perform as well, or better, than $\alpha\beta$ T cells.

Celyad Oncology is the current frontrunner in terms of NKG2D-based CAR therapies. Their CAR construct, which is based on $\alpha\beta$ T cells, consists of extracellular, full-length human NKG2D (serving as both the extracellular recognition domain and transmembrane domain) fused to the intracellular signaling domain of CD3 ζ , which is stabilized through naturally expressed DAP10 (Fig. 1B top) [18,19]. Current versions of the NKG2D-CAR constructs can also contain TCR Inhibitory Molecule (TIM), a small peptide which is capable of interfering with endogenous TCR signaling thought to contribute GvHD (Fig. 1B middle) [20], or an short-hairpin RNA (shRNA) which targets NKG2D ligands MICA and MICB that can be naturally present on T cells, effectively preventing fratricide (Fig. 1B bottom) [21]. NKG2D-CAR T cells are generated in a multistep process. First, white blood cells are isolated from patients through leukapheresis and enriched for T cells. Enriched T cells are activated using IL-2 and α CD3, and the CAR construct transduced using an SFG retroviral vector [22]. These NKG2D-CAR T cells are then expanded in media containing IL-2 before being re-injected into the patients (Fig. 1C) [18,19].

Celyad Oncology is currently testing three different CAR T cells in various types of cancer. CYAD-01 (formerly known as NKR-2) is an autologous NKG2D-CAR T cell, which is being tested alone or

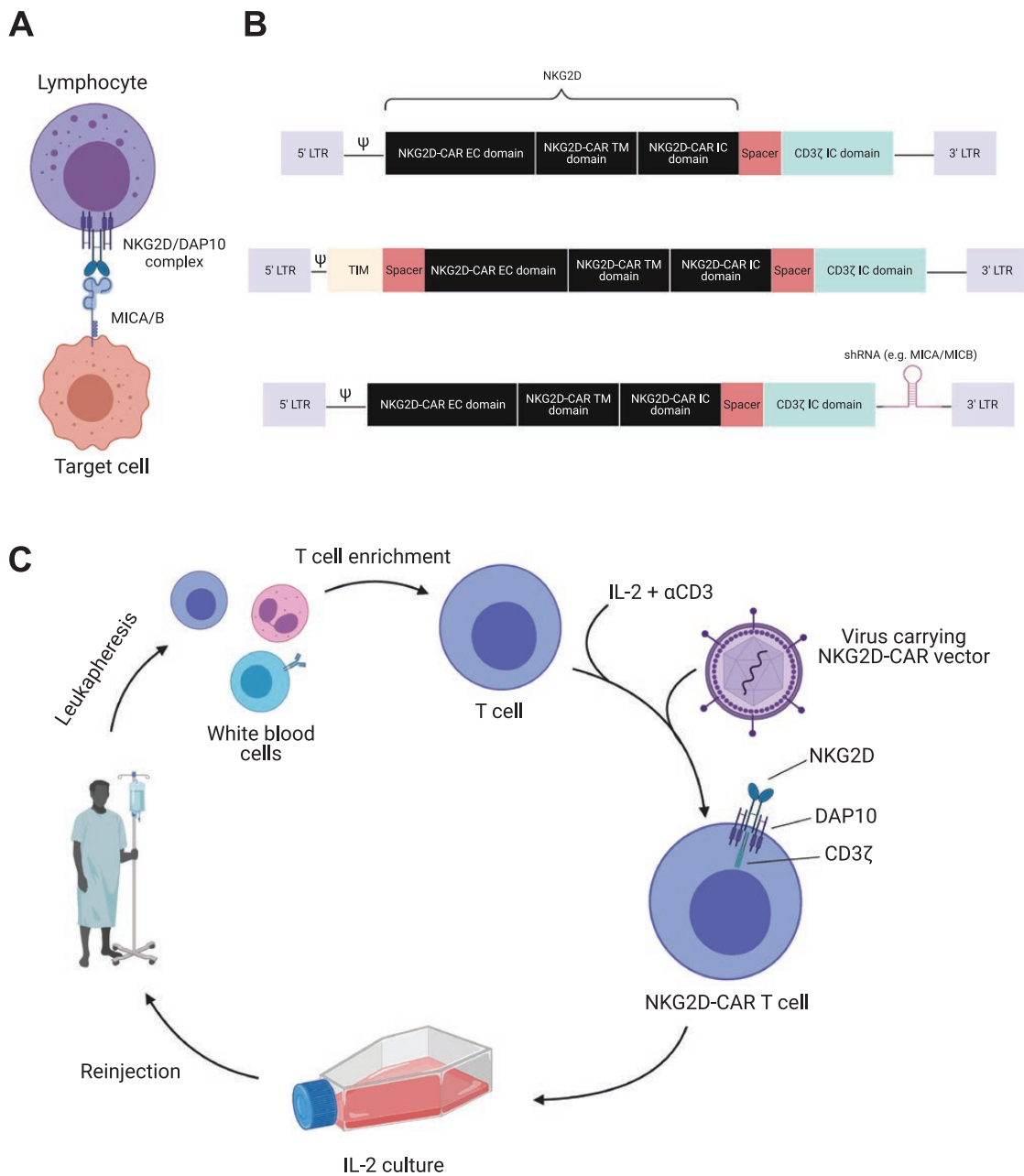


Figure 1. Overview of NKG2D-CAR T cell therapy. (A) Schematic of NKG2D on the surface of lymphocytes interacting with human ligands MICA and MICB. (B) Schematics of Celyad's NKG2D-CAR constructs consisting of an extracellular and transmembrane NKG2D domain, a spacer and intracellular CD3 ζ signaling domain. The base construct can also contain a TCR inhibitory molecule (TIM, middle) or shRNA targeting NKG2D ligands (bottom). (C) NKG2D-CAR T cell pipeline in the clinic. PBMCs are isolated from patients and enriched for T cells. Enriched T cells are expanded and transfected with the CAR, which is stabilized by endogenous DAP10, before being expanded and re-infused into the patient. Created using [Biorender.com](https://www.biorender.com).

Table 1. Summary of current clinical trials, including the treated condition and outcome (if applicable)

Trial number	Trial name	Drug name	Company/ University	NKG2D Construct/ Treatment	Condition	Trial number	Outcome	Reference
NCT02203825		CM-CS1/ CYAD-01	Gelyad Oncology	CAR T cell	AML, MM, MDS	NCT02203825	No objective clinical efficacy No significant CAR T cell expansion & persistence	[23] [24]
NCT03018405	THINK	CYAD-01		CAR T cell	5 solid cancers (CRC, ovarian, bladder, TNB, pancreatic), AML, MM	NCT03018405	Multiple infusions are necessary	[18]
NCT03692429	alloSHRINK	CYAD-101		CAR T cell (after standard chemotherapy)	Unresectable Metastatic CRC	NCT03692429	Anti-leukemic activity in 6/13 patients	[33] [34]
NCT03370198	LINK	CYAD-01		CAR T cell (hepatic transarterial infusion)	Unresectable CRC Liver Metastases	NCT03370198	15 patients: 2 partial response, 9 stable disease	[35] [36]
NCT03310008	SHRINK	CYAD-01		CAR T cell + FOLFOX	CRC Liver Metastasis	NCT03310008		
NCT03466320	DEPLETHINK	CYAD-01		CAR T cell (after non-myeloablative preconditioning)	AML, MDS	NCT03466320		
NCT04167696	CYCLE-1	CYAD-02		CAR T cell (after non-myeloablative preconditioning)	AMD, MDS	NCT04167696		
NCT04107142	CTM-N2D-101	CTM-N2D	CytoMed Therapeutics Pre Ltd	CAR $\gamma\delta$ T cells	CRC, TNBC, Sarcoma, Nasopharyngeal Carcinoma, Prostate & Gastric Cancer	NCT04107142		
NCT04623944		NKX101	Nkarra Inc	CAR NK cell	AML, MDS, MDS	NCT04623944		[37]
NCT04717999		UWNKG2D	UWELL Biopharma	CAR T cell	Recurrent Glioblastoma	NCT04717999		
NCT03415100			The Third Affiliated Hospital of Guangzhou Medical University	CAR NK cells	Solid tumors	NCT03415100		
NCT04270461		KD-025	Jiujiang University Affiliated Hospital / KAEDI	CAR T cell	HCC, Glioblastoma, Medulloblastoma, CRC	NCT04270461	Successful in mice	[38]

Table 1. Continued

Trial number	Trial name	Drug name	Company/ University	NKG2D Construct/ Treatment	Condition	Trial number	Outcome	Reference
NCT04550663		KD-025	The Affiliated Nanjing Drum Tower Hospital of Nanjing University Medical School / KAEDI	CAR T cell	Solid tumor; HCC, CRC, Glioma (relapsed or refractory)	NCT04550663	Successful in mice	[38]
NCT04658004			Zhejiang University / Yake Biotechnology Ltd.	CAR T cell	AML	NCT04658004		

AML, acute myeloid leukemia; CRC, colorectal cancer; HCC, hepatocellular carcinoma; MDS, myelodysplastic syndrome; MM, multiple myeloma; TNB, triple-negative breast cancer.

in combination with chemotherapy in hematological and solid cancers. An improved version of CYAD-01—CYAD-02—which, in addition to the NKG2D receptor, contains the shRNA that targets and knocks down expression of NKG2D ligands on CAR T cells (Fig. 1a bottom), is being trialed in acute myeloid leukemia (AML) and myelodysplastic syndrome (MDS) patients [18,23,24] (Table 1). In addition to the autologous therapy, Celyad Oncology has developed an allogeneic NKG2D-CAR T cell—CYAD-101—for use in patients suffering from unresectable metastatic colorectal cancer (Fig. 2). CYAD-01 was initially tested as a single infusion (NCT02203825), which resulted in no clinical efficacy (Fig. 2 and Table 1). Following this initial trial, four further trials were initiated—THINK (NCT03018405), a dose escalation trial; SHRINK (NCT03310008) a dose-escalation trial administered concurrently with chemotherapy (FOLFOX) in patients with colon cancer liver metastasis; LINK (NCT03370198), a dose-escalation trial with hepatic transarterial infusion, as opposed to i.v. infusion and DEPLETHINK (NCT03466320) a dose-escalation trial with infusion following CyFlu preconditioning in AML and MDS patients. Following the SHRINK trial, the allogeneic NKG2D-CAR T cell was tested in the alloSHRINK trial (NCT03692429), in which CYAD-101 was administered following standard chemotherapy. Celyad Oncology recently announced a collaboration with Merck to test the combination of KEYTRUDA® (pembrolizumab, anti PD-1 antibody) and CYAD-101 in the KEYNOTE-B79 trial, in which they hope to enhance the function of CYAD-101 in the tumor microenvironment and induce a more durable anti-tumor response. Similar to tumor-infiltrating T cells, CAR T cells can upregulate PD-1, impairing their function, and PD-1 blockade might therefore improve CAR T cell efficacy and function [25]. The CYCLE-1 trial (NCT04167696), which was initiated in 2019, is seeking out to test the safety and efficacy of CYAD-02 following CyFlu preconditioning in AML and MDS patients (Fig. 2 and Table 1).

While preliminary results are promising, there are some potential pitfalls to be considered. For one, the presence of NKG2D ligands is not always associated with an enhanced cytolytic immune response against cancer. NKG2D-mediated tumor immune surveillance can exert considerable selection pressure on tumor survival [26]. Therefore, it is not surprising that some human tumors shed NKG2DL from their surface to evade the immune response and therefore produce high levels of a soluble version of NKG2DL. Binding of soluble NKG2D ligand can then result in systemic

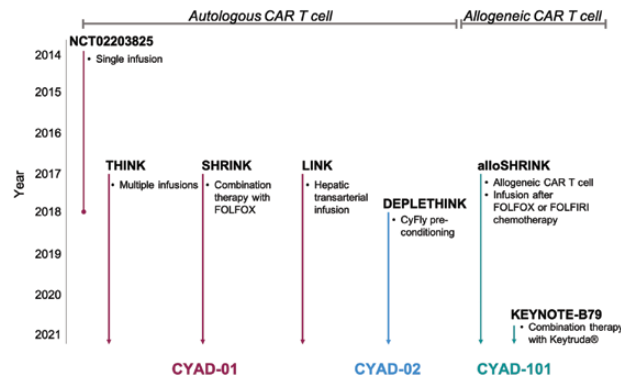


Figure 2. Overview and timeline of clinical trials testing the three different NKG2D-CAR T cells developed by Celyad Oncology. CYAD-01, CYAD-02, and CYAD-101 were tested in various clinical trials with different infusion strategies, combination therapies or preconditioning.

desensitization of NKG2D in effector cells and impaired anti-tumor function [27–29]. Therefore, although the NKG2D receptor may represent a promising treatment strategy for cancer therapy, it should be considered that high levels of soluble NKG2DL may impair immune cell responsiveness by downregulating the NKG2D receptor. Indeed, strategies have been developed to prevent shedding of NKG2DL from the surface of tumor cells [30], which if combined with NKG2D CAR T cell therapy could increase the anti-tumor activity and overcome tumor immune evasion. In addition to ligand shedding and immune evasion, another major concern is that NKG2DL, which is typically absent from healthy tissue, is constitutively expressed on healthy intestinal epithelial cells [31], potentially leading to off-target effects in NKG2D-based immunotherapy. Further, NKG2D has been shown to contribute to tumorigenesis in the setting of inflammation-driven cancer, such as a model of hepatocellular carcinoma [32] and whether NKG2D CAR T cells would contribute to the anti-tumor function or instead foster the tumor-promoting inflammation remains to be determined.

Outlook

The therapeutic potential of NKG2D CAR T cells is high due to the ubiquitous expression of NKG2DL on various cancers and the well-studied anti-tumor function of NKG2D-expressing immune cells. Preliminary data from clinical trials testing NKG2D CAR T cells are promising and research developing improved CAR constructs or combination therapy are ongoing. While most trials utilize $\alpha\beta$ T cells, NKG2D CAR NK cells or $\gamma\delta$ CAR T cells encompass a novel approach that will allow autologous cell transfer and therefore harbors the potential for off-the-shelf therapies.

Acknowledgments

The Editor-in-Chief, Tim Elliott, and handling editor, Stephanie Dougan, would like to thank the following reviewers, Rizwan Romee and anonymous reviewer, for their contribution to the publication of this article.

Funding

This work was supported by the Wellcome Trust (210404/Z/18/Z to S.C.).

Author contributes

All authors contributed equally to this work.

Conflict of interest

The authors declare no conflict of interest.

Data availability

Not applicable.

References

1. Khalil DN, Smith EL, Brentjens RJ *et al.* The future of cancer treatment: immunomodulation, CARs and combination immunotherapy. *Nat Rev Clin Oncol* 2016;13(5): 273–90. <https://doi.org/10.1038/nrclinonc.2016.25>
2. Larson RC, Maus MV. Recent advances and discoveries in the mechanisms and functions of CAR T cells. *Nat Rev Cancer* 2021;21(3):145–61. <https://doi.org/10.1038/s41568-020-00323-z>
3. Hwu P, Yang JC, Cowherd R *et al.* In vivo antitumor activity of T cells redirected with chimeric antibody/T-cell receptor genes. *Cancer Res* 1995;55(15):3369–73.
4. Lee L, Draper B, Chaplin N *et al.* An APRIL-based chimeric antigen receptor for dual targeting of BCMA and TACI in multiple myeloma. *Blood* 2018;131(7):746–58. <https://doi.org/10.1182/blood-2017-05-781351>

5. Balakrishnan A, Rajan A, Salter AI *et al.* Multispecific targeting with synthetic ankyrin repeat motif chimeric antigen receptors. *Clin Cancer Res* 2019;25(24):7506–16. <https://doi.org/10.1158/1078-0432.ccr-19-1479>
6. Weinkove R, George P, Dasyam N *et al.* Selecting costimulatory domains for chimeric antigen receptors: functional and clinical considerations. *Clin Transl Immunology* 2019;8(5):e1049. <https://doi.org/10.1002/cti2.1049>
7. Lanier LL. NKG2D receptor and its ligands in host defense. *Cancer Immunol Res* 2015;3(6):575–82. <https://doi.org/10.1158/2326-6066.cir-15-0098>
8. Diefenbach A, Jensen ER, Jamieson AM *et al.* Rae1 and H60 ligands of the NKG2D receptor stimulate tumour immunity. *Nature* 2001;413(6852):165–71. <https://doi.org/10.1038/35093109>
9. Guerra N, Tan YX, Joncker NT *et al.* NKG2D-deficient mice are defective in tumor surveillance in models of spontaneous malignancy. *Immunity* 2008;28(4):571–80. <https://doi.org/10.1016/j.immuni.2008.02.016>
10. Schmiedel D, Mandelboim O. NKG2D Ligands-Critical targets for cancer immune escape and therapy. *Front Immunol* 2018;9:2040. <https://doi.org/10.3389/fimmu.2018.02040>
11. Grupp SA, Maude SL, Shaw PA *et al.* Durable remissions in children with relapsed/refractory ALL treated with T cells engineered with a CD19-targeted chimeric antigen receptor (CTL019). *Blood*. 2015;126(23):681. <https://doi.org/10.1182/blood.v126.23.681.681>
12. Siegler EL, Zhu Y, Wang P *et al.* Off-the-shelf CAR-NK cells for cancer immunotherapy. *Cell Stem Cell* 2018;23(2):160–1. <https://doi.org/10.1016/j.stem.2018.07.007>
13. Mirzaei HR, Mirzaei H, Lee SY *et al.* Prospects for chimeric antigen receptor (CAR) $\gamma\delta$ T cells: a potential game changer for adoptive T cell cancer immunotherapy. *Cancer Lett* 2016;380(2):413–23. <https://doi.org/10.1016/j.canlet.2016.07.001>
14. Capsomidis A, Benthall G, Van Acker HH *et al.* Chimeric antigen receptor-engineered human gamma delta T cells: enhanced cytotoxicity with retention of cross presentation. *Mol Ther* 2018;26(2):354–65. <https://doi.org/10.1016/j.ymthe.2017.12.001>
15. Rozenbaum M, Meir A, Aharoni Y *et al.* Gamma-Delta CAR-T cells show CAR-Directed and independent activity against leukemia. *Front Immunol* 2020;11:1347. <https://doi.org/10.3389/fimmu.2020.01347>
16. Xie G, Dong H, Liang Y *et al.* CAR-NK cells: a promising cellular immunotherapy for cancer. *EBioMedicine* 2020; 59:102975. <https://doi.org/10.1016/j.ebiom.2020.102975>
17. Fang F, Xiao W, Tian Z. NK cell-based immunotherapy for cancer. *Semin Immunol* 2017;31:37–54. <https://doi.org/10.1016/j.smim.2017.07.009>
18. Nikiforow S, Murad J, Daley H *et al.* A first-in-human phase I trial of NKG2D chimeric antigen receptor-T cells in AML/MDS and multiple myeloma. *J Clin Oncol*. 2016; 34(15_suppl):TPS3102–TPS3102. https://doi.org/10.1200/jco.2016.34.15_suppl.tps3102
19. Nikiforow S, Werner L, Murad J *et al.* Safety data from a first-in-human phase I trial of NKG2D chimeric antigen receptor-T cells in AML/MDS and multiple myeloma. *Blood*. 2016;128(22):4052–4052. <https://doi.org/10.1182/blood.v128.22.4052.4052>
20. Michaux A, Breman E, Mauen S *et al.* Expression of a TIM8 peptide reduces alloreactivity of T cells facilitating an allogeneic NKG2D chimeric antigen receptor T cell therapy approach. *Mol. Ther.* 2018;(26):214.
21. Fontaine M, Demoulin B, Bornschein S *et al.* Next generation NKG2D-based CAR T-cells (CYAD-02): co-expression of a single shRNA targeting MICA and MICB improves cell persistence and anti-tumor efficacy in vivo. *Blood*. 2019;134(Supplement_1):3931–3931. <https://doi.org/10.1182/blood-2019-129998>
22. Büeler H, Mulligan RC. Induction of antigen-specific tumor immunity by genetic and cellular vaccines against MAGE: enhanced tumor protection by coexpression of granulocyte-macrophage colony-stimulating factor and B7-1. *Mol Med* 1996;2(5):545–55.
23. Murad JM, Baumeister SH, Werner L *et al.* Manufacturing development and clinical production of NKG2D chimeric antigen receptor-expressing T cells for autologous adoptive cell therapy. *Cytotherapy* 2018;20(7):952–63. <https://doi.org/10.1016/j.jcyt.2018.05.001>
24. Baumeister SH, Murad J, Werner L *et al.* Phase I trial of autologous CAR T cells targeting NKG2D ligands in patients with AML/MDS and multiple myeloma. *Cancer Immunol Res* 2019;7(1):100–12. <https://doi.org/10.1158/2326-6066.cir-18-0307>
25. Cherkassky L, Morello A, Villena-Vargas J *et al.* Human CAR T cells with cell-intrinsic PD-1 checkpoint blockade resist tumor-mediated inhibition. *J Clin Invest* 2016;126(8):3130–44. <https://doi.org/10.1172/jci83092>
26. Paczulla AM, Rothfelder K, Raffel S *et al.* Absence of NKG2D ligands defines leukaemia stem cells and mediates their immune evasion. *Nature*. 2019;572(7768):254–9. <https://doi.org/10.1038/s41586-019-1410-1>
27. Groh V, Wu J, Yee C *et al.* Tumour-derived soluble MIC ligands impair expression of NKG2D and T-cell activation. *Nature* 2002;419(6908):734–8. <https://doi.org/10.1038/nature01112>
28. Maurer S, Kropp KN, Klein G *et al.* Platelet-mediated shedding of NKG2D ligands impairs NK cell immune-surveillance of tumor cells. *Oncoimmunology* 2018;7(2):e1364827. <https://doi.org/10.1080/2162402x.2017.1364827>
29. Oppenheim DE, Roberts SJ, Clarke SL *et al.* Sustained localized expression of ligand for the activating NKG2D receptor impairs natural cytotoxicity in vivo and reduces tumor immunosurveillance. *Nat Immunol* 2005;6(9):928–37. <https://doi.org/10.1038/ni1239>
30. de Andrade LF, Tay RE, Pan D *et al.* Antibody-mediated inhibition of MICA and MICB shedding promotes NK cell-driven tumor immunity. *Science*. 2018;359(6383):1537–42. <https://doi.org/10.1126/science.aao0505>
31. Groh V, Bahram S, Bauer S *et al.* Cell stress-regulated human major histocompatibility complex class I gene expressed in gastrointestinal epithelium. *Proc Natl Acad*

- Sci usa* 1996;93(22):12445–50. <https://doi.org/10.1073/pnas.93.22.12445>
32. Sheppard S, Guedes J, Mroz A *et al.* The immunoreceptor NKG2D promotes tumour growth in a model of hepatocellular carcinoma. *Nat Commun* 2017;8(1):13930. <https://doi.org/10.1038/ncomms13930>
 33. Sallman DA, Brayer J, Sagatys EM *et al.* NKG2D-based chimeric antigen receptor therapy induced remission in a relapsed/refractory acute myeloid leukemia patient. *Haematologica* 2018;103(9):e424–6. <https://doi.org/10.3324/haematol.2017.186742>
 34. Sallman DA, Brayer JB, Poire X *et al.* Results from the completed dose-escalation of the hematological arm of the phase I think study evaluating multiple infusions of NKG2D-based CAR T-cells as standalone therapy in relapse/refractory acute myeloid leukemia and myelodysplastic syndrome patients. *Blood*. 2019;134(Supplement_1):3826–3826. <https://doi.org/10.1182/blood-2019-128020>
 35. Prenen H, Dekervel J, Hendlisz A *et al.* Updated data from alloSHRINK phase I first-in-human study evaluating CYAD-101, an innovative non-gene edited allogeneic CAR-T in mCRC. *J Clin Oncol*. 2021;39(3_suppl):74. https://doi.org/10.1200/jco.2021.39.3_suppl.74
 36. Braun N, Hendlisz A, Shaza L *et al.* Abstract CT134: A phase I study assessing the safety and clinical activity of multiple hepatic transarterial administrations of a NKG2D-based CAR-T therapy CYAD-01, in patients with unresectable liver metastases from colorectal cancer. *Clin Trials*. 2018;CT134–CT134. <https://doi.org/10.1158/1538-7445.am2018-ct134>
 37. Bachier C, Borthakur G, Hosing C *et al.* A phase 1 study of NKX101, an allogeneic CAR natural killer (NK) cell therapy, in subjects with relapsed/refractory (R/R) acute myeloid leukemia (AML) or higher-risk myelodysplastic syndrome (MDS). *Blood*. 2020;136(Supplement 1):42–3. <https://doi.org/10.1182/blood-2020-134625>
 38. Dai H, Yang D, Sun B *et al.* Development of NKG2D chimeric antigen receptor-T cells as targeted therapy of liver cancer. *J Clin Oncol*. 2018;36(15_suppl):e15057. https://doi.org/10.1200/jco.2018.36.15_suppl.e15057